

# SDC

engineering

Hydraulic Engineering



Capability Statement

## Contents

.....	2
Company Details .....	3
Key Services .....	3
Insurances .....	3
Key Personnel .....	4
Latest Projects.....	6
Our Projects.....	10
Our Portfolio .....	15



## **Company Details**

SDC Engineering is an engineering consultancy firm, it is comprised of staff with over 18 years' experience in the **design, management, and construction** of commercial hydraulic and public domain projects.

SDC can confidently assist, by applying the qualifications and extensive skills our team possesses and by collaborating with the design and construction teams, to deliver innovative and cost-effective solutions for a variety of projects regardless of complexity or scale.

**Company Name:** SDC Engineering Pty Ltd

**ABN:** 47 619 400 001

**Phone No.:** 1300 61 50 50

**M:** +61 422 992 612

**Address:** Suite 501/ 280 Pitt Street, Sydney NSW 2000

**Email:** [info@sdcengineering.com.au](mailto:info@sdcengineering.com.au)

**Website:** <http://www.sdcengineering.com.au/>


## **Key Services**

- Project Management
- Projects Estimating
- Budget Control
- Construction Supervision
- Commissioning and Site Reporting
- Manuals and As Built Documentation
- AutoCAD and Revit modelling
- Water Feature Designs
- Irrigation System Designs
- Pump Stations and Filtration
- Stormwater Harvesting
- Green Walls and Vertical Gardens

Our extensive experience in the local market guarantees efficiency, quality and reliability.

## **Insurances**

SDC Engineering has in effect and regularly maintains:

- Public Liability insurance (\$10M)
  - Professional Indemnity insurance (\$10M limit and \$20M in aggregate)
  - Workers Compensation Insurance
- 



## Key Personnel



### **Sayed Salem**

#### Senior Hydraulic and Irrigation Engineer

*BSc.AgE; Hy-F.Mec; Diplr; CIAg 19446*

Sayed has extensive experience and expertise in the design, management and construction aspects of large commercial innovative projects in Australia, Middle East and Egypt.

Sayed's irrigation and hydraulic experience has encompassed the design, estimation, installation and project management of large and commercial irrigation networks, pump stations, filtration systems and commercial hydraulic works which includes green walls, vertical gardens, water

features and stormwater harvesting.

In addition, Sayed has held senior site management responsibilities for civil, agricultural and commercial landscape construction projects in Australia, Emirates, Qatar and Egypt where he has been involved in all facets associated with the design and delivery of a successful product.



### **Ahmed Mawhoub**

#### Civil Engineer

*BSc Eng (Civil), MIE (Aust)*

Ahmed has the local experience in the construction industry working on major building projects in The Middle East and Australia. He has led and provided pre and post dilapidation survey of 1000's of adjoining properties, roads and Council assets to major developments and road infrastructure throughout Sydney CBD and Metropolitan area.

He is also arranging and leading Civil and Structural site inspections, assessment of repairs to damaged buildings and structures. Project management, Cost estimation and Contract Administration. Generating and revising drawings for construction in coordination with trades, subcontractors and clients.



## **Ayman ElTantawy**

### Principal Structure Engineer

*PhD, MSc, CPEng, NER, RPEQ, MIEAust, M.ACI*

A chartered structural engineer with a PhD in structural finite element simulation and double master's degrees in structure – soil interaction and structural strengthening of buildings. Ayman has over 17 years' experience in the structural engineering industry in Australia, UK, US and the Middle East. Leading joint-venture engineering teams within global consultants ae SOM, PLP, GENSLER, AURECON, Mott-MacDonald, PACE, ATKINS, BuroHappold.

Ayman is an expert in structural dynamics, sophisticated structures, long-roofs, high-rise buildings (60+ floors), with a longlist of iconic structures delivered in Australia and Overseas.

---



## **Art Bulan**

### Civil Engineer

*MIEAust CPEng NER APEC Engineer IntPE(Aust)*

Experienced in detailed civil and structural design. Skilled in all aspects of engineering work procedures, including project management, preparing design calculations and undertaking civil and structural analysis with an understanding of engineering and Australian design standards and the National Construction Code.

---



## **Andrew Le**

### Drafting Design Specialist and Undergraduate Structural Engineer

*Bachelor of Engineering (Honours) Diploma in Professional Engineering Practice, Structural Engineering*

Andrew is an Undergraduate Structural Engineering student with strong skills in AutoCAD and engineering practices, detail minded and well known for getting the job done while keeping quality and the customer's need in mind.

Andrew has a rich background in hydraulic and structural engineering that encompasses multiple versions of designs for review by Engineers and Architects. Also produced effective designs by using understanding of engineering and Australian design standards.



## Latest Projects

Sanctuary Landing – Phase 1: Wentworth Point, NSW 2127

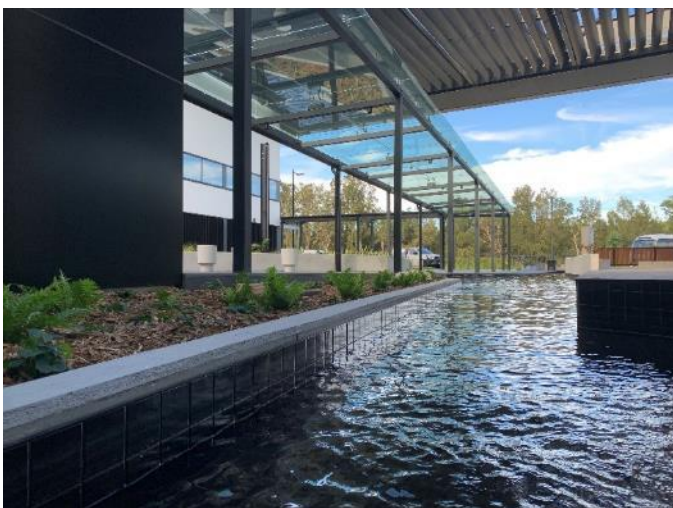


**Cascade Water Feature** comprises 13 cascading ponds over 3 levels linking the podium level to the public domain.

**Completed: January 2021**



Dicker Data Facility: Kurnell, NSW 2231



**Reflective Pond Water Feature; with 346 m2 of crystal clear water body stretches across the facility's entry.**

**Completed: March 2021**



Centenary Square Fountain Restoration: Parramatta, NSW 2150



**Restoration of Parramatta, Centenary Square fountain for City of Parramatta; inclusive of pumping station, treatment and control units.**

**Estimated Completion: April 2021**



Blackmores Administration Building: Warriewood, NSW 2102

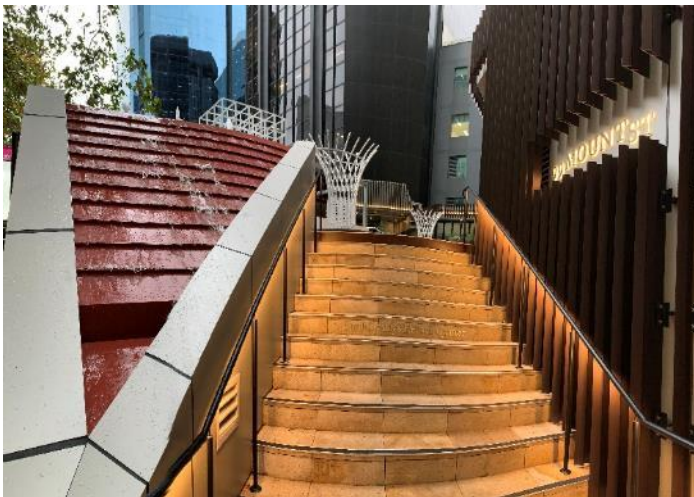


**Entry Display Ponds; Water Feature Restoration inclusive of pump station, display jets, treatment and control units.**





**Forrest Development: Forest, ACT. (Cascade Water Feature)**



**99 Mount Street, North Sydney (Cascade Water Feature)**



**Newmarket Development: Randwick, NSW (Reflective pond & Infinity edge feature)**



## Completed Projects



**Taronga Wildlife Retreat - Taronga Zoo (Open Space Irrigation and Vertical Garden)**

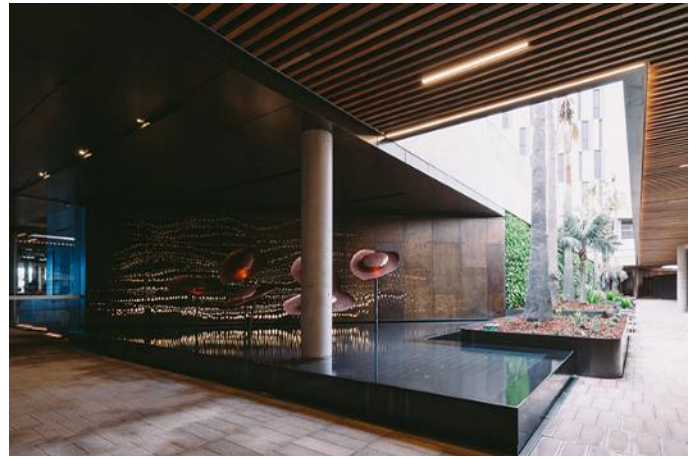


**Green Square Library – City Of Sydney Council & John Holland Group Pty Ltd (Jets Display & Splash Pad)**

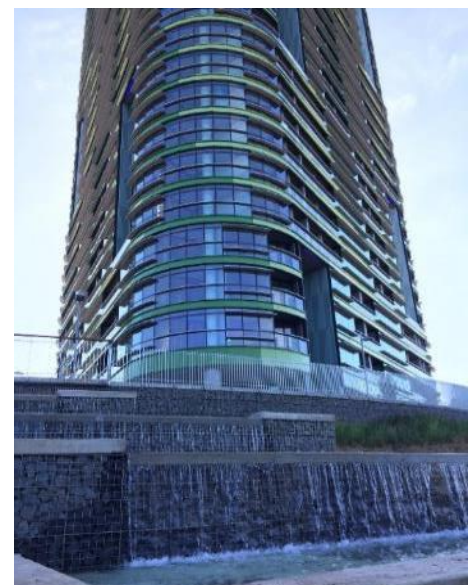


**Hercules Park Development – Economic Development Queensland  
(Automatic Irrigation System & Public Domain Water Feature)**





Harbord Diggers, Freshwater, NSW – Mounties Group & Ganellen Pty Ltd (Reflective Ponds & Infinity Edges)



Opal Tower, Sydney Olympic Park – ICON Co (Automatic Irrigation System & Cascade Water Feature)



Sydney University Health Precinct– Laing O'Rourke (Automatic Irrigation System & Public Domain Water Features)





**Dairy Road Development: Fyshwick, ACT – Lolita (ACT) Pty Ltd (Water Play Area)**



**Gosford League Club – Hunter & Central Coast Development (Automatic Irrigation System)**



**Dee Why Town Centre: Dee Why, NSW – Meriton Group (Public Domain Water Feature)**





**Shore School Playing Fields: Northbridge, NSW – (Playing Fields Irrigation & Stormwater Reuse)**



**Apex Park Development – Liverpool Council  
(Automatic Irrigation System)**



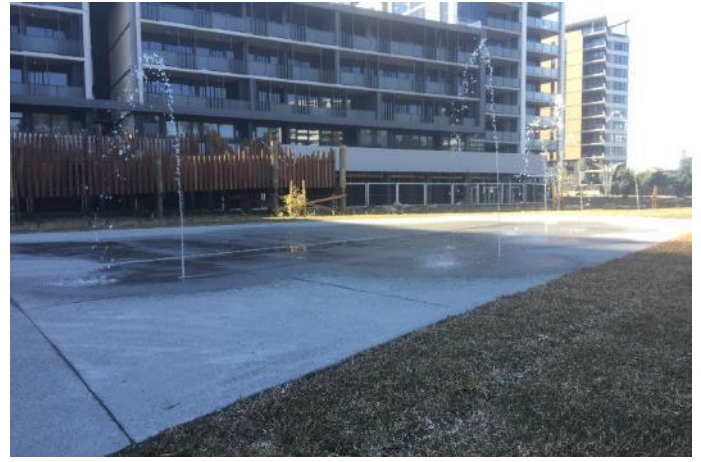
**101 Waterloo Road, Macquarie Park NSW  
JQZ Group (Automatic Irrigation System)**



**The Ian Potter Wild Play Garden – Centennial Park, Sydney, NSW 2021  
Centennial Trust (Kids Water Play Area)**







**Parramatta Promenade – Parramatta, NSW**  
**ProBuild Pty Ltd (Potable Water's Kids' Play)**



**Redman Road Plaza: Dee Why, NSW**  
**Northern Beaches Council ( Water Play Area)**



**Elara Boulevard, Marsden Park NSW**  
**Stockland (Rainwater Basin Recirculation System)**



## Our Portfolio



**One Central Park, Broadway NSW**

**Frasers Property (High-Rise Green Wall Landscape works, Complete Automatic Irrigation system Design & Construct)**



**Darling Harbour Live – Darling Harbour, Sydney NSW**

**Lendlease (Public Domain Water Features @ Chinese Gardens & ICC Stream Display Feature)**



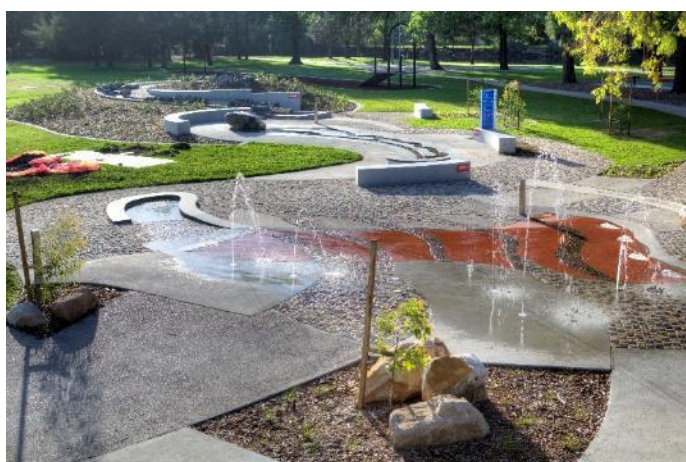
**Sydney Park Stormwater Harvesting & Management – Alexandria, NSW 2015**

**City Of Sydney Council (Storm Water Harvesting & Wetlands Upgrade works)**





**Thornton Development - Penrith NSW 2750**  
**Landcom (Automatic Irrigation System & Public Domain Water Feature)**



**Marrickville Park Upgrade – Marrickville, NSW 2204**  
**Marickville City Council (Kids Water Play Area)**



**Centenary Square Upgrade, Parramatta NSW 2150**  
**Parramatta City Council (Public Domain Water Feature)**



**Regiment Square - Wynyard Station, Sydney NSW**  
**City of Sydney Council (Reflective Water Feature)**





## **HYDRAULIC ENGINEERING**

**Commercial Irrigation**

**Stormwater Harvesting**

**Water Reuse**

**Water Features & Play Parks**

[www.sdcengineering.com.au](http://www.sdcengineering.com.au)